



MASSEY FERGUSON

72 – 132HP

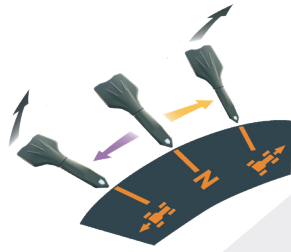
MF 4700
MF 5700
MF 6700

Tier 2 Emission Compliant



FROM MASSEY FERGUSON

8 Exclusive Pro



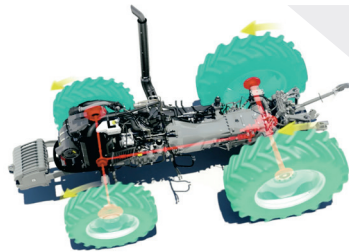
CONTROL

- Low pressure clutch pedal design
- Synchronised reverse shuttle
- Electronic or mechanic shuttle



AGCO POWER ENGINE

- From 72hp to 132hp Turbocharger
- Common engine with the S series



FRONT AXLE

- High ground clearance 4WD with Hydrolock*
- 55° Steering angle



CAB VERSION**

- Slim exhaust pipe
- Air conditioning system
- Low noise level



For Every Farm



Rice Crop

Cultivation of **rice in Paddy conditions** is really tough on the machines and requires the best quality product. This is the reason why we spent **82,837 hours of field testing** during the development assuring the best reliability in all conditions. All Massey Ferguson tractors can be specified with full paddy sealing. A **two speed independent PTO** option perfectly matches the implement requirement to the working conditions.



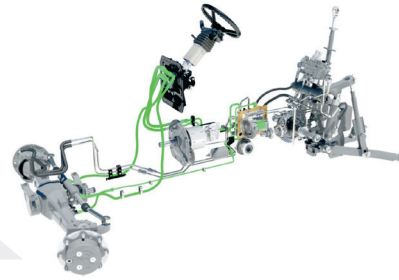
Cassava

Cultivation of **Cassava** requires precision. Massey Ferguson tractors come with the well proven **Electronic Linkage Control (ELC)** as an option, enabling precise implement control. **Draft control** ensures **maximum traction** at all times, minimizing **wheel slip and fuel consumption**. A **24x24 creeper** further enhances productivity by matching the forward speed with the soil conditions, optimising machine efficiency.

Product Features

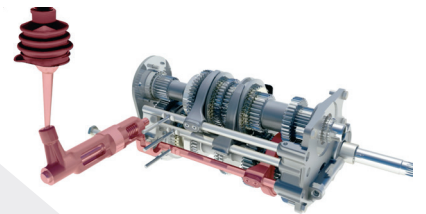
HYDRAULIC

- Up to 100l/min**
- Up to 3 spool valves
- Up to 5.3 tones lifting capacity



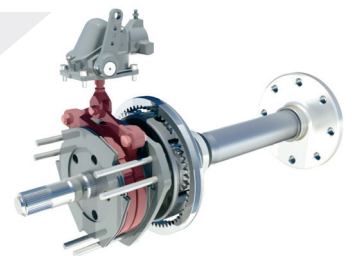
TRANSMISSION

- 12x12 synchronized
- Pressurized lubrication
- Creeper option



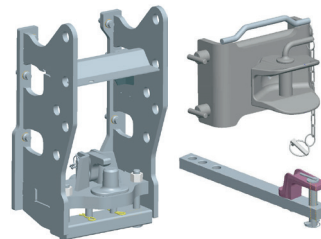
REAR AXLE

- 2 speed PTO
- Oil immersed multidisc brakes
- Ground speed PTO



HITCHES

- Drawbar, pintle pin** or clevis, to cover all application



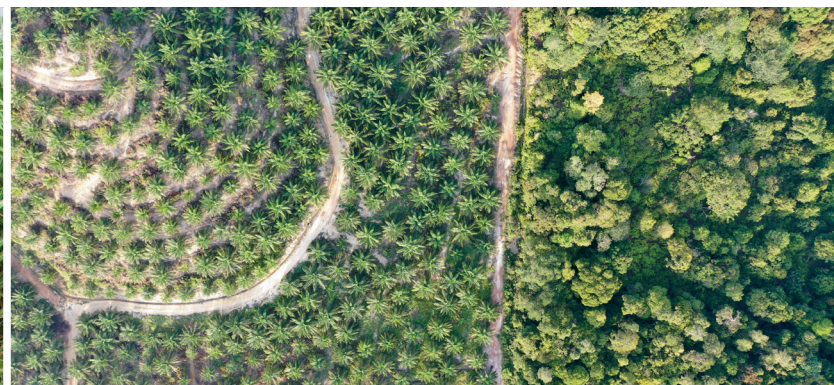
*In base Essential version
**Available of MF5700 and 6700

arming Industry



Sugar Cane

Sugar Cane requires versatile and efficient multi-use tractors for: **Haulage** (field/road), **cultivation**, **subsoiling** and **planting** through the crop cycle. The 12x12 fully synchronized transmission is designed with 6 speed and 2 ranges, **ideal for transportation**. Combined with the latest pressurized lubrication technology, giving power delivery efficiency with minimum power absorption even under heavy load application such as **subsoiling**.



Palm Oil

Operation in **Palm Oil** requires hydraulic usage. The **newly designed hydraulic system**, transmission mounted and powered by **two gear pumps** provides reliability. The first pump is dedicated for the internal service and the second for the linkage and spool valve, a **must have when operating a grapple**. In addition, the MF 5700 and MF 6700 are available with a 3rd pump, giving **100 l/min** oil flow at the press of a button. This reduces the cycle time for trailer tipping and front loader operation.

Specifications

Model Number:	MF4707ST	MF4708ST	MF4707ES	MF4708ES	MF5709ES	MF5710ES	MF6711ES	MF6712ES	MF6713ES	
Operator environment	Foot Step		Semi Platform		Semi Platform & Cab with flat floor					
Variants	STANDARD				ESSENTIAL					
Engine Performance										
Engine hp (kW)	72 (53)	82 (61)	72 (53)	82 (61)	92 (68)	102 (68)	112 (83)	122 (91)	132 (98)	
Max torque at 1,500 rpm (Nm)	296	342	296	342	380	410	467	490	540	
Rated engine speed (rpm)	2200									
Engine Characteristics										
Engine Type (AGCO POWER)	AP33	AP44	AP33	AP44						
No. of Cylinders - Capacity (liter)	3 - 3.3l	4 - 4.4l	3 - 3.3l	4 - 4.4l						
Aspiration	Turbocharged									
Transmission										
12 x 12 Synchro	Pressure lubrication									
Shuttle operation	Left hand side shifting lever		Left hand console mounted lever							
Clutch type	Mechanical shuttle – Dry Clutch									
Clutch option	-		Power Shuttle - Multi-Plate Wet Clutch							
Creeper	24x24 – 0.16kph @ 2200 rpm									
Power Take-off										
Independent PTO	540 - 6 spline									
Option	Option 1 : 540/540Eco -6 spline Option 2 : 540/1000 - 6&21 spline				Cab : 540/540Eco - 6 spline Cab & Semi Platform : 540/1000 - 6&21 spline					
Engagement	Electro hydraulic									
Steering										
Hydrostatic	Base									
Hydraulics										
3-point linkage control	Lever operated				Lever operated. Option: Rocker switch with Electronic Linkage Control					
Max lift capacity (kg)	3,000				4,300		5,200			
Max oil flow - Stage 1 (L/min)	27l/min dedicated for steering brakes, diff lock, PTO, 4WD				33l/min dedicated for steering brakes, diff lock, PTO, 4WD					
Standard max oil flow - Stage 2 (L/min)	65 l/min dedicated for spool valve and linkage				58 l/min dedicated for spool valve and linkage					
Optional max oil flow - Stage 2 (L/min)	-				58 l/min dedicated for the rear linkage + 42 l/min supplying spool valve					
Combined 100l/min flow control	-				Fully automatic (Electrical switch)					
System pressure (bar)	200									
Spool Valves										
Auxiliary	2x Double Acting / Kick Out / Float									
Flow Divider	-		Option			-				
Brakes										
Type	Oil immersed multi disc (2x5) wet brakes									
Weights and Dimention										
Weight without ballast - (kg) 4WD	3,300				4,070 (cab) / 3,600 (ROPS)		4,500 (cab) / 4,000 (ROPS)			
Capacities										
Fuel tank (litres)	82	105			170					

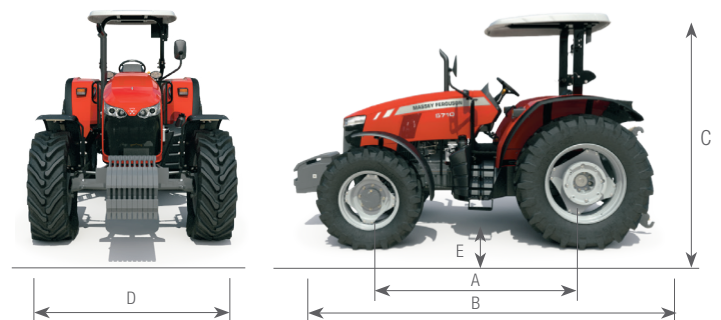
Dimensions:

A - Wheelbase - mm
B - Overall length from front weight frame to rear linkage arms - mm
C - Height to top of canopy/cabin - mm
D - Overall track width - mm
E - Maximum ground clearance - mm

	MF4707	MF4708	MF5709	MF5710	MF6711	MF6712	MF6713
A	2250	2360	2430	2430	2500		
B	4066	4175		4305			
C	2570 with 16.9 R 34 tyres		2710/2650 with 16.9 R 34 tyres		2740/2730 with 18.4 R 38		
D	1795 to 2587				1380 to 1925		
E	460		480		520		



Web: www.MasseyFerguson.com.au
 Facebook: www.Facebook.com/MasseyFergusonGlobal
 Twitter: [Twitter.com/MF_EAME](https://twitter.com/MF_EAME)
 Instagram: [Instagram.com/MasseyFergusonGlobal](https://www.instagram.com/MasseyFergusonGlobal)
 YouTube: www.YouTube.com/MasseyFergusonGlobal
 Blog: Blog.MasseyFerguson.com



Every effort has been made to ensure that the information contained in this publication is as accurate and current as possible. However, inaccuracies, errors or omissions may occur and details of the specifications may be changed at any time without notice. Therefore, all specifications should be confirmed with your Massey Ferguson Dealer or Distributor prior to any purchase. For even greater productivity a range of optional equipment is available. For full details please consult your local Massey Ferguson dealer.