



Reversible plough
MASTER 103



MASTER 103



Summary

- 04 High strength headstocks and frame
 - 05 Plough leg safety in all conditions
 - 06 Ploughing bodies, points and skimmers
 - 07 Spécifications
-

MASTER 103

Reversible plough

THE KUHN PLOUGH

THE FUTURE OF FARMING LIES IN COMPETITIVENESS AND PROFITABILITY. THE MASTER RANGE CONCEPT WITH ITS ADVANCED FEATURES WILL CONTRIBUTE TO A QUICK RETURN ON YOUR INVESTMENT.

THE KUHN PLOUGH WILL ALLOW YOU TO :



- Maintain a high quality soil structure with an efficient burial of organic matter and an even aggregate spread throughout the soil profile - crop yields will be increased.
- Have at your disposal a wide range of working width settings and a excellent overall manoeuvrability - “in field” costs will be reduced.
- Benefit from a number of technological innovations such as the reinforced box section, the variable width, the plough structure protection systems (Hydraulic non-stop or traction bolt) - the working life of the plough is increased and maintenance costs reduced.
- Profit from a renowned reliability and long working life allowing you to work throughout the day without interruption - your plough will also keep a high second-hand value.

Opt for a Kuhn plough - because obtaining high yields and optimizing financial results all starts with high quality ploughing.

HIGH STRENGTH HEADSTOCKS AND FRAME

Robust, reliable and economic ploughs

- Large trash burial capacity, the traction bolt models can be adjusted from 70 cm to 75 cm underbeam clearance.
- Independently mounted skimmers for quick and easy adjustment.
- Depth control wheel in line with frame.
- Transport wheel fitted with suspension.



Robust, reliable and economic ploughs.

- Large trash burial capacity, the traction bolt models can be adjusted from 70 cm to 75 cm underbeam clearance.
- Independently mounted skimmers for quick and easy adjustment.
- Depth control wheel in line with frame.
- Transport wheel fitted with suspension.

High strength frame

Simplified adaptation to tractor wheel settings. Mechanical adjustment of plough angling (front furrow width).

- Frame section :
 - 100 mm for 2E/3T & NSH - 3E/4T
 - 120 mm for 3E/4NSH - 4E/5T
 - 100 mm for extension.

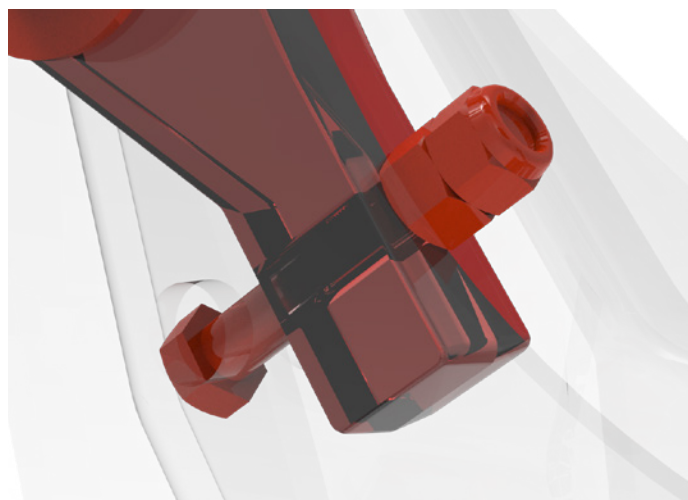
PLOUGH LEG SAFETY IN ALL CONDITIONS

Depth and transport wheels

The Ø 500 mm steel, or Ø 600 mm rubber tyre wheel follows any change of ploughing width.

It features simple depth adjustment by screw adjuster, with the possibility of setting left and right sides differently.

It can be placed in many positions on the frame to ensure optimum positioning for all conditions.



T-safety

Tensile breakage at a share point load of 3,000 kg (MASTER 123) and 4,000 kg (MASTER 153 and 183) avoids too frequent stresses on the safety device.

- No shearing effect as the bolt is only loaded in tension.
- No ovality of the support nut.
- No jamming of the Ø 16 mm bolt after breakage, it is very easy to replace.
- The ploughing depth is maintained despite the triggering of the T safety device.

NSH safety

The general design of non-stop safety systems allows for an increasing or decreasing release curve upon encountering the obstacle.

As the body is lifted, the resistance to the tip increases, giving it more energy to return to the ground.

The integration of all the elements increases the flow channel of the soil and residues.

Exceptional clearances : + 70 cm vertically and 20 cm laterally, on both sides ; the highest values on the market.

Weight saving : - 25 kg / ploughing body compared to a mechanical non stop.

VARIBAR option : allows the pressure at the share tip to be varied from the tractor while ploughing: immediate adaptation to working conditions.

MAXIBAR option : instantaneous overtrimming (600 to 2500 kg) of the safety devices to work on very heavy soils.

PLOUGHING BODIES, POINTS AND SKIMMERS

CLASSIC TYPE PLOUGH BODIES



Hélicoïdal L

Versatile body for mounted or discarded ploughing depending on the working speed. Large clearance at the bottom of the furrow for the passage of wide tires.

- Working depth between 18 and 35 cm
- Tire width: 710 mm

Helicoidal T, C and HC also available



Hélico-Cylindrique N

Cylindrical in the front part and helical in the rear part, it has a very low draught.

- Working depth from 15 to 30 cm
- Pneumatic width : 650 mm

Cylindrical P also available



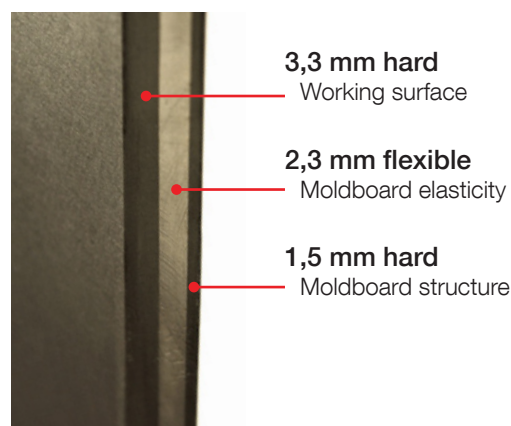
VP Slatted Body

Consists of interchangeable and independent blades. It reduces the adherence of heavy and wet soils.

- Working depth between 20 and 30 cm
- Pneumatic width: 650 mm

VL Slatted body also available

MOULDBOARDS WITH UNEQUAL LAYER TRIPLEX STEEL



Increase the life of your mouldboards by 40%

TRIPLEX mouldboards have uneven layers with more thickness in the working area and a softer layer in the middle to ensure the best compromise between wear resistance and ploughing quality.

Your KUHN plough equipped with TRIPLEX mouldboards gives you one of the lowest wear costs per hectare on the market.

FORGED AND TREATED TIPS



MARATHON

Special heat treated forged steel. Reversible for maximum efficiency. Featuring a step giving better landside protection.



OLYMPIC

Special heat treated forged steel. Reversible for maximum efficiency. More pronounced form at wearing zones on the point for longer life and better protection of the landside. Point is self sharpening for good ground penetration at all times.



SUPER MARATHON

Special heat treated forged steel fitted with a tungsten carbide tip. High wear resistance. Four to five times the life of a traditional share point. A sharp working edge is maintained for excellent ground penetration.

INDEPENDENT FULL SAFETY SKIMMERS

The role of the skimmer is essential since it allows to cut the strip of soil to bury the organic manure in the bottom of the furrow before the passage of the body.



All purpose ZX skimmer

Well adapted to ploughing on cereal or maize stubbles. ZXL : large share, ZXE : small share.

Helicoidal ZH skimmer

Helicoidal skimmer for deep trash burial. Well adapted to grassland ploughing.

ZRL high capacity skimmer

High capacity skimmer for trash incorporation throughout the soil profile. Excellent straw and maize trash burial.

Specifications

Model	Beam configuration E : Extensible	Mac auto- rized tractor power (kW/ hp)	T Safety				NSH Safety			
			Weight* (kg)	Working width (inches/cm)	Clearance (cm)		Weight* (kg)	Working width (inches/cm)	Clearance (cm)	
					under beam	point to point			under beam	point to point
MASTER 103	2 E	44/60	530	14"/35 cm and 16"/40 cm	70 and 75	90	675	14"/35 cm and 16"/40 cm	70	90
	3 (2+1)	66/90	740				895			
	3 E		755				965			
	4 (3+1)	88/120	965				1190			
	4 E		995				/			
	5 (4+1)	110/150	1195							
	Frame section <input checked="" type="checkbox"/> 100 for 2E/3 on T and NSH and 3E/4 on T <input checked="" type="checkbox"/> 120 for 3E/4 NSH and 4E/5 on T									

Information given as an indication and varies according to equipment and country of delivery.



KUHN PARTS



Designed and manufactured to rival time. KUHN foundries and forge as well as a high-level manufacturing process allow the production of spare parts to defy time. You can truly rely on our know-how and our genuine parts. Farmers benefit from our client support and logistics services via any KUHN PARTS warehouse, which provide quick and reliable repair solutions in cooperation with your nearest authorized KUHN dealer.



KUHN SERVICES*

- KUHN sos order** - Express spare parts service 24/7
- KUHN protect+** - The choice of professionals!
- KUHN i tech** - For ever quicker repairs!
- KUHN finance** - Invest rationally!

*Not all services and equipment are available in every country.

MyKUHNN

MY CONNECTION TO SUCCESS !

MyKUHNN is your on-line customer space. Sign up now and discover how the exclusive services offered by MyKUHNN will facilitate the management of your fleet of KUHN machines and terminals as well as help you maximize their performance. Once identified, on computer, smartphone or tablet, you will have access to parts catalogs, technical documentation and numerous connected services.



Discover the KUHN plough ranges



1. MASTER 103 - 2. MASTER 113 - 3. MASTER 123 - 4. MASTER 153 - 5. MASTER L - 6. MASTER 183

KUHN-HUARD SAS - Zone Horizon - 2, Rue de Québec - F-44110 CHATEAUBRIANT - France

For more information about your nearest KUHN dealer, visit our website www.kuhn.com

Information given in this document is only for information purposes and is non-contractual. Our machines are in compliance with regulations in force in the country of delivery. In our literature, and for improved illustration of certain details, some safety devices may not be in operating position. When operating these machines, these devices must be in position in accordance with the requirements indicated in the operator's manuals and assembly manuals. Respect the tractor gross vehicle weight rating, its lift capacity and maximum load per axle and tyres. The tractor front axle load must always comply with the regulations of the country of delivery (In Europe, it must reach minimum 20 % of the tractor net weight). We reserve the right to change any designs, specifications or materials listed without further notice. Machines and equipment in this document can be covered by at least one patent and/or registered design. Trademarks cited in this document may be registered in one or several countries.

To protect the environment, this leaflet is printed on chlorine-free paper.
Printed in France - 950003 GB - 09.21 - Copyright 2021 KUHN

